



**adult  
school**

---

2026

# Real World English for your future success!

[About us](#)

[Why study in Ireland?](#)

[Why Apollo?](#)

[Location & The School](#)

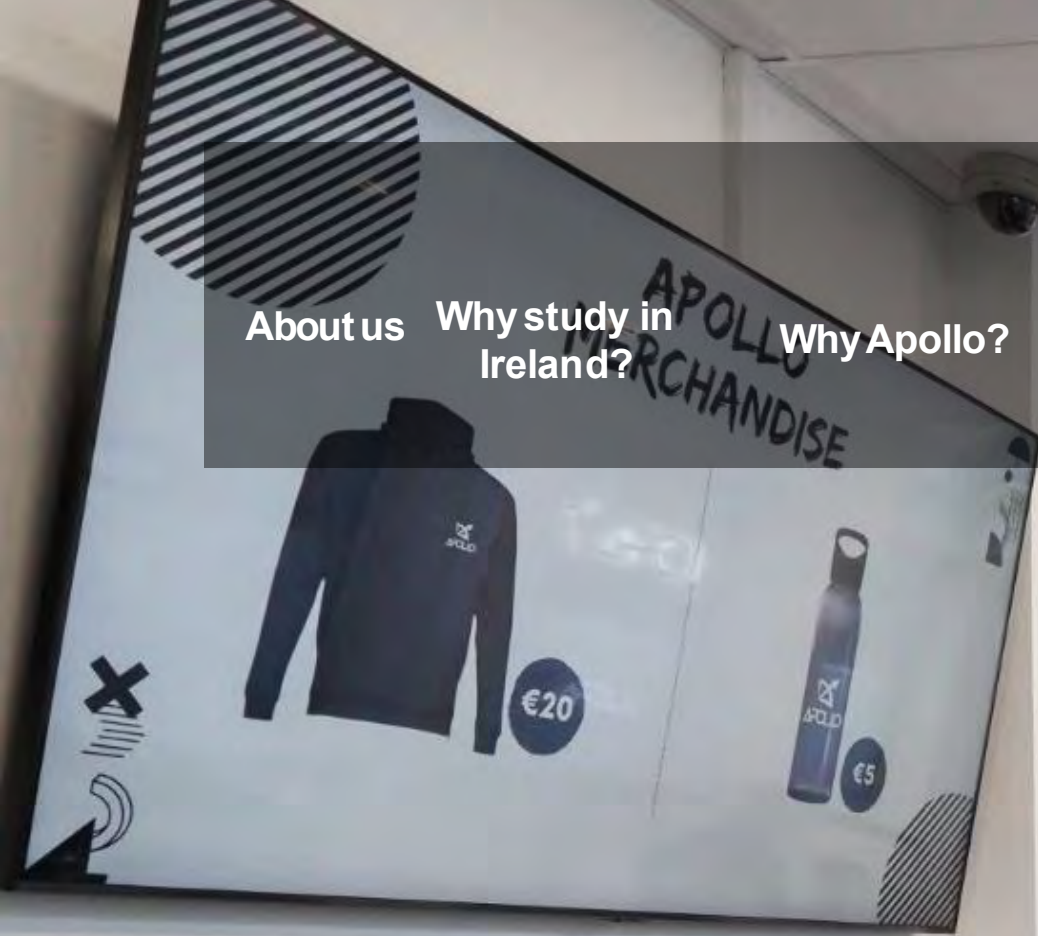
[Our Courses & Programmes](#)

[Accommodation](#)

[Social Programme & Apollo App](#)

[Gallery](#)

[Contact Us](#)



[Contents](#)





## About Apollo

Apollo Language Centre is an award winning English language school in Ireland. With a school for adults in Dublin city centre and Apollo Camps for juniors in Dublin, Cork & Limerick, Apollo offers you the promise of an unforgettable experience.

### Apollo Adult School

We provide high quality courses for adults aged 16+ at the adult school in Dublin city centre located at 5 Lad Lane, only 5 minutes walk from Grafton Street and St Stephen's Green. Your course at Apollo will prepare you to use English in 'real world' situations and will take into account your interests & strengths and weaknesses, as well as your short and long term goals.

### Award Winning Programmes

**Apollo is the proud winner of TEN Study Travel Star Awards!**

Apollo is the first language school in Ireland to be inducted into the StudyTravel Super Star Hall of Fame in 2023 after winning the 'Star Junior Programme for under 18s' award for five years in a row in 2018, 2019, 2020/2021, 2022 and again in 2023.

We also won the 'Star New School' Award in 2019 as well as winning in the 'English Language School – Europe' category three times in 2022, 2023 and 2024.

The most memorable achievement for Apollo was winning in the 'Leading Star' category in 2024, becoming the second organisation in the world to win this prestigious award.

★★★★★





Adult  
School

**Why Study in Ireland?**

With a population of just over 5 million, Ireland welcomes approximately 7 million tourists each year—and for good reason! Recently named the World’s Friendliest Country by *Lonely Planet*, Ireland is known for its warm hospitality, lively spirit, and ability to make visitors feel instantly at home.

**A Top Choice for English Language Learners**

Over 130,000 students choose Ireland each year to study English. In fact, Ireland was ranked #1 for student satisfaction in Europe in a survey of over 17,000 students.

**Quality & Recognition**

Ireland offers internationally recognized quality assurance in its English language education sector, making it a trusted alternative to destinations like the UK and Malta. Plus, it’s the only English-speaking country in the Eurozone—a major advantage for European students.

**Clear Communication**

Irish people are known for speaking clearly and patiently, especially with non-native speakers, making it an ideal environment for language learning.

**A Hub for Global Careers**

Ireland is home to the European headquarters of major global companies like Google, Facebook, Twitter, and LinkedIn, offering students the chance to connect with exciting career opportunities.

**A Unique Cultural Experience**

From its rich history and vibrant culture to its friendly locals and beautiful landscapes, Ireland offers a truly unforgettable experience for students from around the world.

**Why Ireland?**

# Why Apollo?

## Tuition Hours

1 hour/lesson = 60 minutes

## No Summer Supplements

We do not charge supplements on courses or accommodation during Summer

## Award Winning School



## Peace of mind before arrival



We will send you all your pre-arrival information & documentation in a timely manner and we will be available for any questions you may have.

## Apollo Student App



You will receive your login details for the Apollo Student App on your booking confirmation letter giving you full access to your booking information, school information and much more.

## Apollo GO - Goals & Objectives

Monthly one-to-one feedback sessions are offered to all students to review progress and provide support in achieving their individual goals.

## Apollo Real World Learning

Apollo students will follow a structured programme to enable them to practice their English in real world situations such as job interviews, meetings, presentations, communicating by email & conducting skype calls though English.



# Much more than just an English School!

## Apollo Team

It is important for us that you feel happy at Apollo from the start so you will meet with the Apollo team on your first day and we will be available throughout your programme.



## Apollo English Only Policy

The best way to learn English is to speak only English, so it is our policy that everyone always speaks English in the classroom and accommodation, around the school and during activities & excursions.

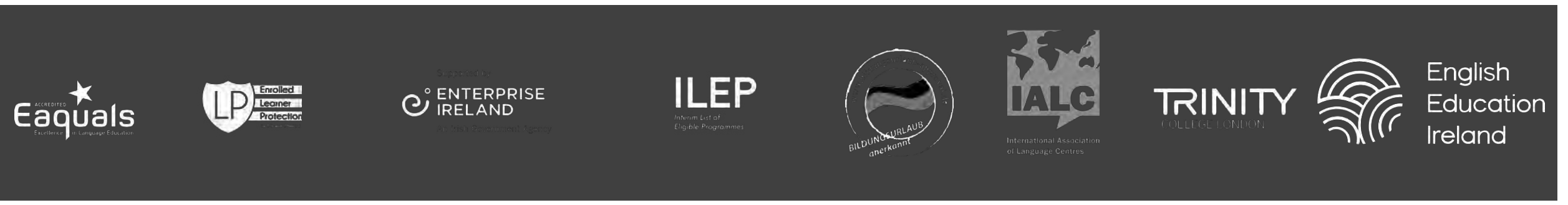


## Apollo Certificate – A Proud Achievement to Take Home

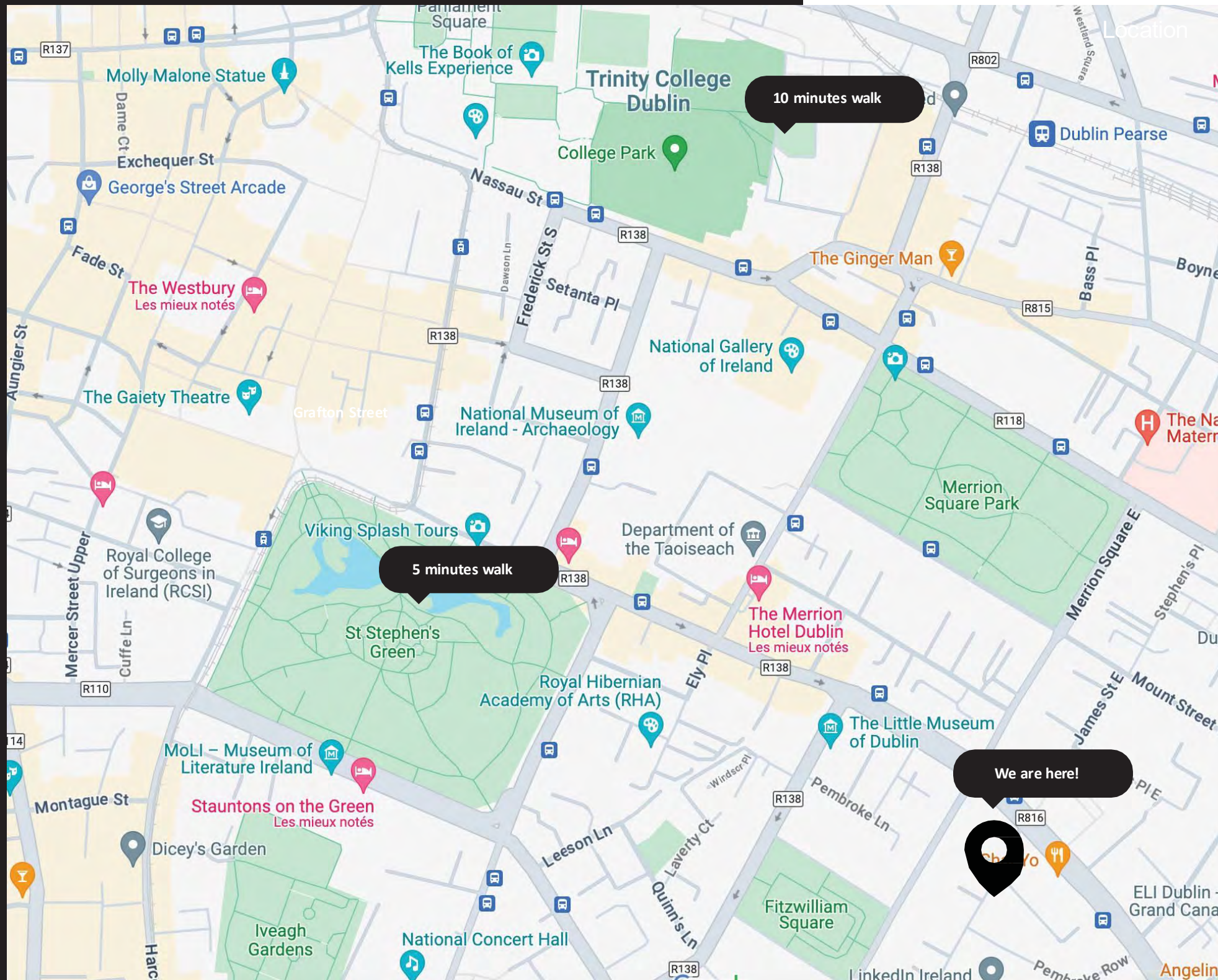
At the end of the programme, each student receives a final graded certificate—recognising their progress and accomplishments in English.



Adult School



# Location



Apollo Language Centre's Adult School is ideally situated in the heart of Dublin, just a 5-minute walk from Grafton Street and St. Stephen's Green. Our address at 5 Lad Lane, Dublin 2, is a highly desirable location, right beside LinkedIn's new European Headquarters.

Nestled on a quiet street off Baggot Street in the city's central business district, the school is surrounded by a wide range of cafés, bars, restaurants, and shops—making it the perfect setting for a language course in Dublin.

# The School



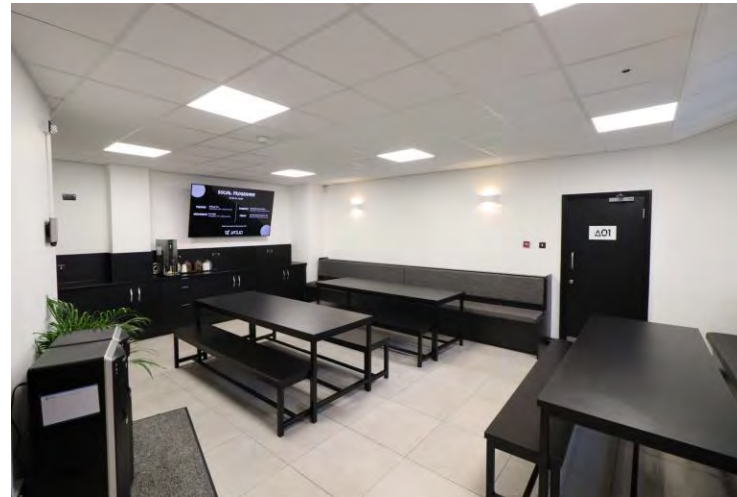
The school building underwent a complete upgrade and renovation in 2023 and now spans three floors, featuring 15 modern classrooms—all equipped with TVs, iPads, and audio-visual technology. Students can enjoy a spacious, modern cafeteria with self-service tea and coffee facilities and an outdoor area.

There are also dedicated quiet study spaces, comfortable lounge areas with full Wi-Fi access, and a game zone with arcade games for relaxation and fun. The building includes an elevator for easy access and a stylish, welcoming reception area just inside the front door.



### Key Facts:

- The Apollo Year-Round School is located in Dublin city centre in (Dublin 2) within 10 minutes' walk to Grafton Street and St Stephen's Green shopping areas
- Lad Lane is a quiet street just off Baggot Street in the city's central business district and we are located right next door to the European Headquarters of LinkedIn
- There is a modern & spacious cafeteria & outdoor area with free self-service tea/coffee facilities
- The school building had a full upgrade and renovation in 2023 and consists of 3 floors with 15 classrooms all equipped with TV, iPad & audio-visual equipment
- There are quiet study & lounge areas with wifi throughout & a game zone with arcade games for our students to enjoy!
- The building is serviced by an elevator and has a stylish & welcoming reception inside the front door



Adult School



# The School

# Real World English

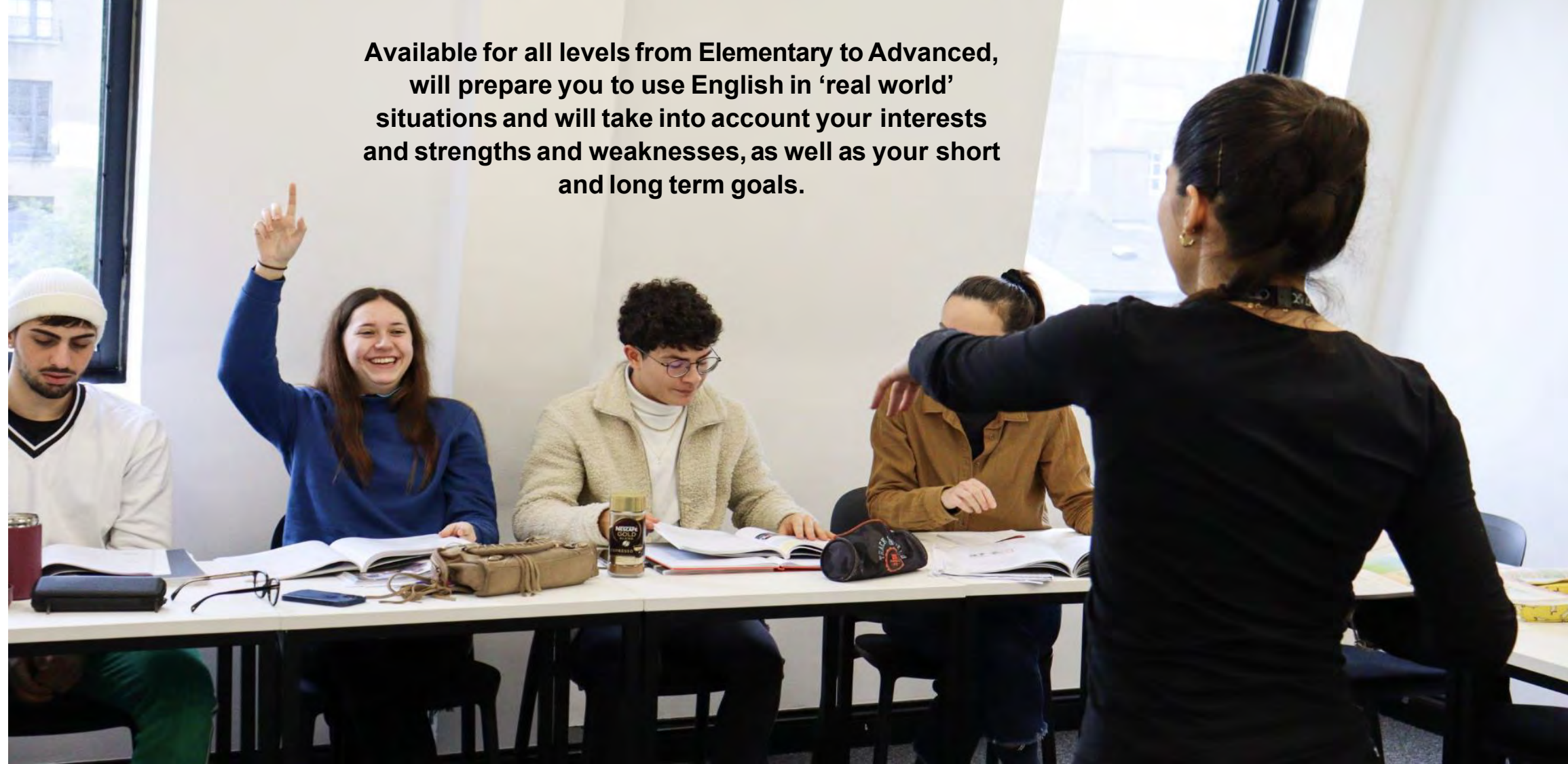
## Morning

Age: 16+

20 hours per week: 09.00-13.15 Monday-Friday

Maximum class size: 15 students

Start Dates: Every Monday



Available for all levels from Elementary to Advanced, will prepare you to use English in 'real world' situations and will take into account your interests and strengths and weaknesses, as well as your short and long term goals.

## Real World English +

Age: 16+

25 hours per week

Timetable: 09.00-13.15 Monday-Friday and 14:00 - 16:30 Tuesday & Thursday

Maximum class size: 15 students

Start Dates: Every Monday

## Gap Year + IELTS Exam

Duration: 24 or 32 weeks – Real World English + IELTS exam

Age: 16+

20 hours per week: 09.00-13.15 Monday-Friday

Maximum class size: 15 students

Start Dates: Every Monday

# Exam Focus

## IELTS Focus

Age: 16+

20 hours per week: 09.00-13.15 Monday-Friday

Maximum class size: 15 students

Start Dates: Every Monday

**IELTS Focus** available for levels Upper-Intermediate to Advanced, consists of 20 hours per week focusing on improving students' English as well as developing their exam techniques for the **IELTS exam**.

At the end of each week, students will sit one part of an **IELTS exam**, under exam conditions.

## FCE Focus

Age: 16+

20 hours per week: 09.00-13.15 Monday-Friday

Maximum class size: 15 students

Start Dates: Every Monday from 15 June - 28 August 2026

**FCE Focus** available for levels Upper-Intermediate to Advanced, consists of 20 hours per week intensive preparation and practice for all components of the **Cambridge First Certificate Exam (FCE)**.

A huge emphasis is placed on preparing students for every aspect of the exam ensuring adequate cover of each of the skills.

## CAE Focus

Age: 16+

20 hours per week: 09.00-13.15 Monday-Friday

Maximum class size: 15 students

Start Dates: Every Monday from 15 June - 28 August 2026

**CAE Focus** available for Advanced level students, consists of 20 hours per week intensive preparation and practice for all components of the **Cambridge Advanced Exam (CAE)**.

A huge emphasis is placed on preparing students for every aspect of the exam ensuring adequate cover of each of the skills.



Adult  
|  
School

# Study & Work Programme

## Key Facts

Address: 5, Lad Lane – Dublin2

Age: 18+

Maximum class size: 15 students

Start Dates: Every Monday

The **Study and Work Programmes** are available for non-EU visa requiring students and consist of 25 weeks of study plus 10 weeks of holidays. Students are permitted to work part-time for the whole 35 weeks and full-time during the 10 weeks holidays. Students booking this programme must book an end of programme exam and medical insurance for the whole duration of their stay. At Apollo, we offer students the choice of booking the **TIE**, **Cambridge** or **IELTS** exams and the exact exam is decided during the firstweek of your course at the school.

**MORNING AND AFTERNOON REAL WORLD ENGLISH** available for all levels from Elementary to Advanced, will prepare you to use English in 'real world' situations and will take into account your interests and strengths and weaknesses, as well as your short and long term goals.

## Morning

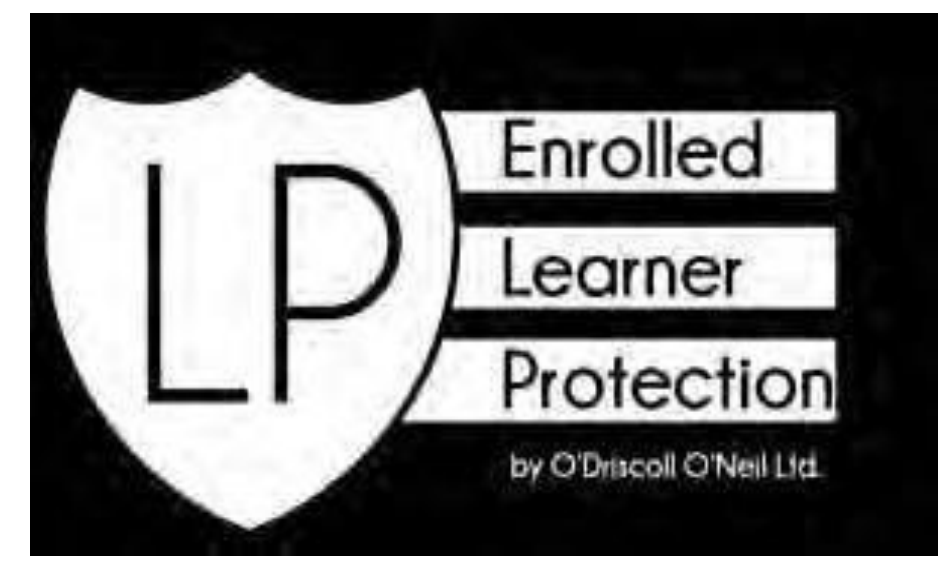
20 hours per week: 09.00-13.15 Monday-Friday  
Maximum class size: 15 students

Start Dates: Every Monday

## Afternoon

15 hours per week: 13.45-17.00 Monday-Friday  
Maximum class size: 15 students

Start Dates: Every Monday



# Teachers' Course: CLIL + Methodology

## Key Facts

Start Dates: 30 March, 27 July, 19 October 2026

25 hours per week: 09.00-13.15 Monday-Friday  
and 14.00-15.15 Monday-Thursday

Duration: 1 week course

Address: Dublin City Centre

Age: 18+

Maximum class size: 15 students

The Training Course for Teachers of English is suitable for secondary school teachers of English who have a minimum English level of Upper-Intermediate. The course is designed by our Teacher Training department to help teachers refresh their English language skills, explore new methodologies and different approaches to teaching a language and take home lots of practical ideas and activities to use with their own students.

### Useful Programme Features

**Theory/practice:** Understand the 'thinking' that goes into a successful communicative English language lessons, and how to execute this in the classroom.

**Planning:** How to effectively plan a language lesson using logical stages which will benefit your teaching.



# Professional English Courses

## Professional English in Leadership

**Duration:** 2 or 4 weeks  
**Start Dates:** 02/03/26, 05/10/26

**Minimum Age:** 17

**Tuition:** 20 hours per week

**Time-table:** 09.00-13.15 Monday-Friday

## Professional English in Marketing

**Duration:** 2 or 4 weeks  
**Start Dates:** 05/01/26, 10/08/26

**Minimum Age:** 17

**Tuition:** 20 hours per week

**Time-table:** 9.00-13.15 Monday-Friday

## Professional English in Business

**Duration:** 2 or 4 weeks  
**Start Dates:** 03/02/26, 07/09/26

**Minimum Age:** 17

**Tuition:** 20 hours per week

**Time-table:** 09.00-13.15 Monday-Friday

## Professional English Gap Year

**12 weeks Real World English Course +  
12 weeks Professional English Course**

**Duration:** 24 weeks

**Start Dates:** 05/01/26, 11/05/26, 08/06/26, 06/07/26,  
10/08/26.

**Minimum Age:** 17

**Tuition:** 20 hours per week

**Time-table:** 09:00-13:15 Monday-Friday



# Internship Programme

## Key Facts

**Minimum Age:** 16

**Start Dates:** Every Monday

**Course Duration:** Minimum 2 weeks

**Internship Duration:**

Entry level Internship: 4+ weeks

Professional Internship: 8+ weeks

**Minimum English level:**

Entry level Internship: B1

Professional Internship: B2

**Accommodation:** Host Family or Adult Residence

A minimum of six weeks' notice is required to ensure we can organize a placement that fits the student's skills and career goals.

### Entry-Level Internships

Entry-level internships are ideal for students seeking hands-on experience in sectors like retail, hospitality, bars, or restaurants. These roles help develop practical workplace skills, customer service experience, and teamwork abilities, even without prior professional experience.

### Professional Internships

Professional internships are suited for students or graduates with relevant academic background or some work experience in their field. These placements offer more responsibility and involvement in projects, allowing participants to apply their knowledge in a professional setting. Examples include roles in finance, HR, digital marketing, IT, research, or project management.



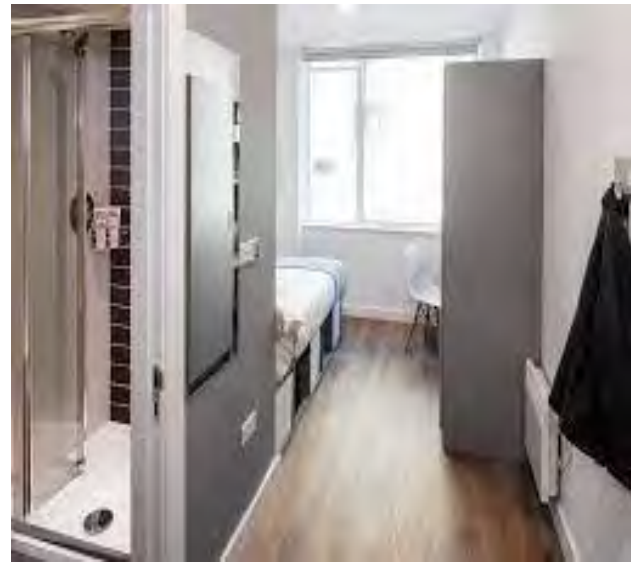
Internship placements can be anywhere across the greater Dublin area and are tailored to match your skills and career goals. Work schedules are set by the host company, providing valuable hands-on experience to develop your skills, expand your network, and strengthen your CV.



We provide a range of high-quality accommodation options to suit the needs and preferences of our students. For those aged 18 and over, we offer modern student apartments located in the heart of Dublin city centre. Our Adult Residence offers single bedrooms with en-suite bathrooms, all located within walking distance of the school.

For students aged 16 and above, we also offer carefully selected host family accommodation in the suburbs of Dublin. Staying with a host family is a great way to experience Irish culture, practise English in a real-life setting, and enjoy a welcoming home environment. All our host families are experienced, friendly, and regularly inspected to ensure the highest standards of care and comfort.

# **Accommodation**



### Key Facts

Arrival/Departure: Sunday-Sunday

Available: All year-round

Address: Canvas Point Campus, Mayor Street Upper, Point Village, Dublin.

Canvas Point Campus has everything you need and more to make the most of your student life in Dublin. Each apartment has between 4-8 bedrooms centres around a spacious shared living space and kitchen with oven, hob, fridge/freezer, microwave, toaster and kettle.

### Location

Canvas Point Campus student accommodation is conveniently located in Point Village, in the heart of Dublin's regenerated Docklands area. The distance to the Apollo Adult School is 30 minutes' walk, 30 minutes by public transport or 10-minute cycle.

### Gym

The gym has everything from assault bikes to treadmills. For those who prefer to stretch it out grab your mat and head to the fitness studio to practice some aerobics or yoga.

### Study Room

There is a spacious study area where students can quietly study alone or in small groups with wifi and charging docks for laptops.

**Your Room:** Each bedroom has a private en-suite shower room, double bed(4'6/ 121x182cm) with built-in under-bed storage, wardrobe with hanging space and shelving, coat racks and a full-length mirror. All bedrooms come with a desk and a chair, USB charging points and Wi-Fi.

### Your Apartment( shared with 7 other residents):

Shared kitchen fitted with all the cooking essentials including microwave, kettle, toaster and oven, as well as crockery, cutlery and utensils. Shared dining area and shared comfortable lounge with flat screen TV.

### It's All Included:

All your maintenance bills (electricity, heating, water, gas and contents insurance). High-speed WiFi. 24-hour maintenance support and security. Bicycle storage. Bed linen & towels are provided.

### Common Room

Students have the unique opportunity to meet new friends in the large shared common area at any time of the day.



Adult School

# Adult Residence



### **Experience Irish Hospitality with Apollo Host Families**

For students aged 16 and over, our host family accommodation offers a warm and authentic Irish experience. Located in the suburbs, homes are typically within 60 minutes of the school and city centre by public transport.

### **A Home Away from Home**

Stay in a welcoming Irish household, perfect for those eager to immerse themselves in local culture and practise their English. Irish people are famously friendly and love a good chat!

### **Accommodation Options**

Private single bedrooms in family homes  
Double or twin rooms available for couples or friends  
Rooms include a bed (single or double), study desk, and wardrobe or hanging space

### **Meals Included**

Daily breakfast and dinner  
Full board (breakfast, lunch, and dinner) on weekends

### **Facilities**

Shared family bathroom  
Weekly laundry service  
Weekly bed linen change

# Host Family



## The Apollo Experience – Beyond the Classroom

Your Apollo journey doesn't end when class does! Join our exciting Apollo Social Programme and explore the very best of Ireland with the help of our amazing Student Experience Team.

### Something Fun Every Day

Our vibrant activities programme runs six days a week, offering everything from cultural museum visits to thrilling weekend surfing trips. There's never a dull moment!

### Stay Informed & Get Involved

Apollo Staff visits classrooms regularly to share the week's schedule and answer any questions. You can also find the latest updates on our Instagram stories and the Apollo App.

### Mostly Free, Always Fun

Most activities are free of charge. Occasionally, a small fee may apply for certain local excursions—but don't worry, we'll always let you know in advance.

### Afternoon Adventures

To make the most of the Apollo Social Programme, be sure to choose a morning course—our activities take place in the afternoons!

# Apollo Social

# Apollo Jobs Club

Apollo Language Centre is delighted to offer its students our **FREE** Job Search Seminars at the school every 2 weeks, delivered by experts to ensure our students have the best chance of securing a job during their study programme in Dublin.

In Jobs Club, we discuss:

- How to apply for a PPS (social security) number which is essential to be able to work in Ireland
- Preparing your CV and Cover Letter
- Cultural Integration
- Job Search
- Preparing for your Interview

## Student Support

Our dedicated team ensures you have everything you need to succeed both in and out of the classroom.

Apollo services include personalized academic guidance, engaging cultural and social activities, assistance with visa requirements and your Job search journey.

We're here to help you make the most of your educational experience.

If you ever need help, our team is always ready to provide the support you need!

## Welcome Talk

Our welcome talk on the first day is tailored to guide you through the essentials of living in Ireland & studying at Apollo.

We provide key information on local practices, resources, and everyday tips to help you settle in quickly and comfortably.

Our aim is to ensure you feel at home and well-prepared as you embark on your new adventure here at Apollo.

## Walking Tour of Dublin City Centre

To kick off your Apollo Experience, we provide a **FREE** walking tour of Dublin City Centre on your first day. This guided tour introduces you to important landmarks, local attractions, and essential services, helping you get acquainted with the city. It's the perfect opportunity to begin your exploration of Dublin, helping you to feel more comfortable and engaged with the city from day one.

## Apollo Feedback

Your satisfaction is our priority, and we rely on your feedback to continuously improve.

We'll check in with you after your first week to see how you're settling in, and every Friday, we'll ask for your weekly feedback to ensure we're meeting your needs.

At the end of your course, we'll gather your final thoughts to learn how we can improve. Your input is crucial in helping us enhance our programs and better serve you and future students.

## Visa Support

Our visa support begins on your first day with a comprehensive visa meeting. This session will help you understand your visa requirements and provide answers to any questions you may have. We're here to assist you every step of the way, making sure your registration with the Immigration Office is as seamless as possible so you can dive right into your studies.

# The Apollo App

## Stay Connected with the Apollo Student App

Make the most of your Apollo experience with our **free and easy-to-use Student App**, available before and during your programme.

The app gives you instant access to:

- Your personal and booking details
- Accommodation information
- Attendance records
- Important documents
- Weekly Apollo Social Programme updates

You'll receive your login details in your **Student Booking Confirmation Letter**, so you can download the app right away. Just search "**Apollo Language Centre**" in your app store to get started!





| Gallery

# Contact us

We are on social media and would love you to follow us!  
Keep posted about activities and events in our school and learn about some interesting facts and places in Ireland!

  [@apollolanguagecentre](https://www.instagram.com/apollolanguagecentre)

[experience@apollolanguagecentre.com](mailto:experience@apollolanguagecentre.com)

If you have any questions or requests, please contact us!

[www.apollolanguagecentre.com](http://www.apollolanguagecentre.com)

